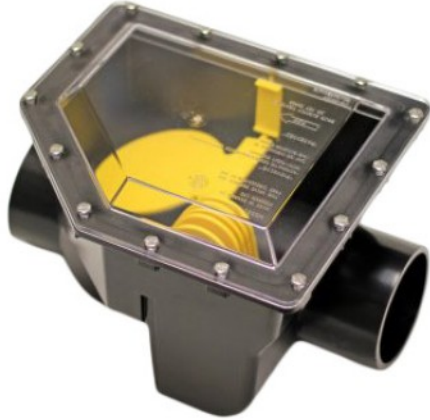


# Fullport Retrofit Backwater Valve



**Brand:** Mainline  
**Product No:** ML-FR4.PL

## Description

- Normally open float-ball controlled gate. CSA approved
- Spigot ends allow for easy-installation. Unlike other valves this valve has a minimal fall 3/8" through the body which means it's easier to install.
- Gate and hinge are elevated - away from sewage environment
- Clear view allows for quick visual installation
- Simply cut out enough pipe for valve and simply drop in and connect to plumbing system. This can be done in as little as 24" of excavation, if utilizing existing building cleanout.
- All other valves have greater falls through the body and require at least 4-5 feet of concrete breaking just to make up the fall through the body.
- NO 2-foot rule as in other valves.

## Dimensions

Pipe Size = 4"

14 1/2" W × 9"H

